



INSTRUCTIONS

-J01921

REV. 10-1-2003

Kit Number 50601-01

DYNA FLOORBOARD KIT

General

This forward foot controls kit is designed for use on all 1996 and later FXD models and includes all parts required to make a complete conversion from the standard controls to custom floorboard controls.

This kit is compatible with Engine Guard part number 49218-01

WARNING

A SERVICE MANUAL IS REQUIRED TO INSTALL THIS KIT. The rider's safety depends upon the correct installation of this kit. Follow the procedures listed in this instruction sheet and in the appropriate Service Manual. If the procedures are not within your capabilities, or if you do not have the correct tools, have your Harley-Davidson Dealer perform the installation. Failure to follow instructions could result in death or serious injury.

Kit contents

Item	Description	Part No.
1	Bolt, 5/16-18 x 5/8 hex HD	2882W
2	Hex cap screw, 5/16-18 x 2.00 (2)	3023
3	Socket head cap screw, self tapping (8)	3214
4	Set screw, shaft cover	3231B
5	Assembly, rear brake pedal	33699-01A
6	Assembly, shift lever	33704-01
7	Assembly, adjustable shifter rod	33719-79B
8	Lever, shifter, machining, polish	33706-01
9	Assembly, shifter plate, polish	33700-01
10	Cover, shifter lever, rubber (2)	33619-85
11	Retainer, shift lever	
	<i>for 1996 to 2000 models</i>	34639-93
11A	Retainer bracket, shift lever,	
	<i>for 2001 and later models</i>	34639-01
12	Cover, shifter shaft	34640-93
13	Washer, wave, overlap type (2)	34641-01
14	Linkage, rear brake push rod	41954-01
15	Pad, brake pedal	42416-83
16	Clevis pin	42460-80B
17	Socket head cap screw	4740A
18	Assembly, right front footboard	50521-01
19	Right rear footboard support	50526-01
20	Left front footboard support	50529-01
21	Left rear footboard support	50530-01
22	Assembly, footboard (2)	50632-85
23	Shoulder bolt, 1/4-20 x 1 (4)	50635-82A
24	Cotter pin	515
25	Washer, 5/16" (2)	6016
26	Washer, 1/4"	6099
27	Washer, 7/16"	6516HW
28	Washer, 5/16"	6702
29	Lockwasher, 3/8" (8)	7045
30	Nut, hex, locking, 5/16-18	7710W
31	Flange nut, 1/4-20 (4)	7716
32	Acorn nut, 5/16-24	7736
33	Hex jam nut, 5/16-24	7744
34	Lock nut, nylon insert, 7/16-14	7827W

Installation

SHIFTER ASSEMBLY (LEFT SIDE)

1. Remove highway footrest assembly, if equipped. Discard bracket, plate and mounting hardware.
2. Remove stock footrest assembly.
3. Remove stock (chrome) shift lever. Retain shift lever, peg, bolt and washer.

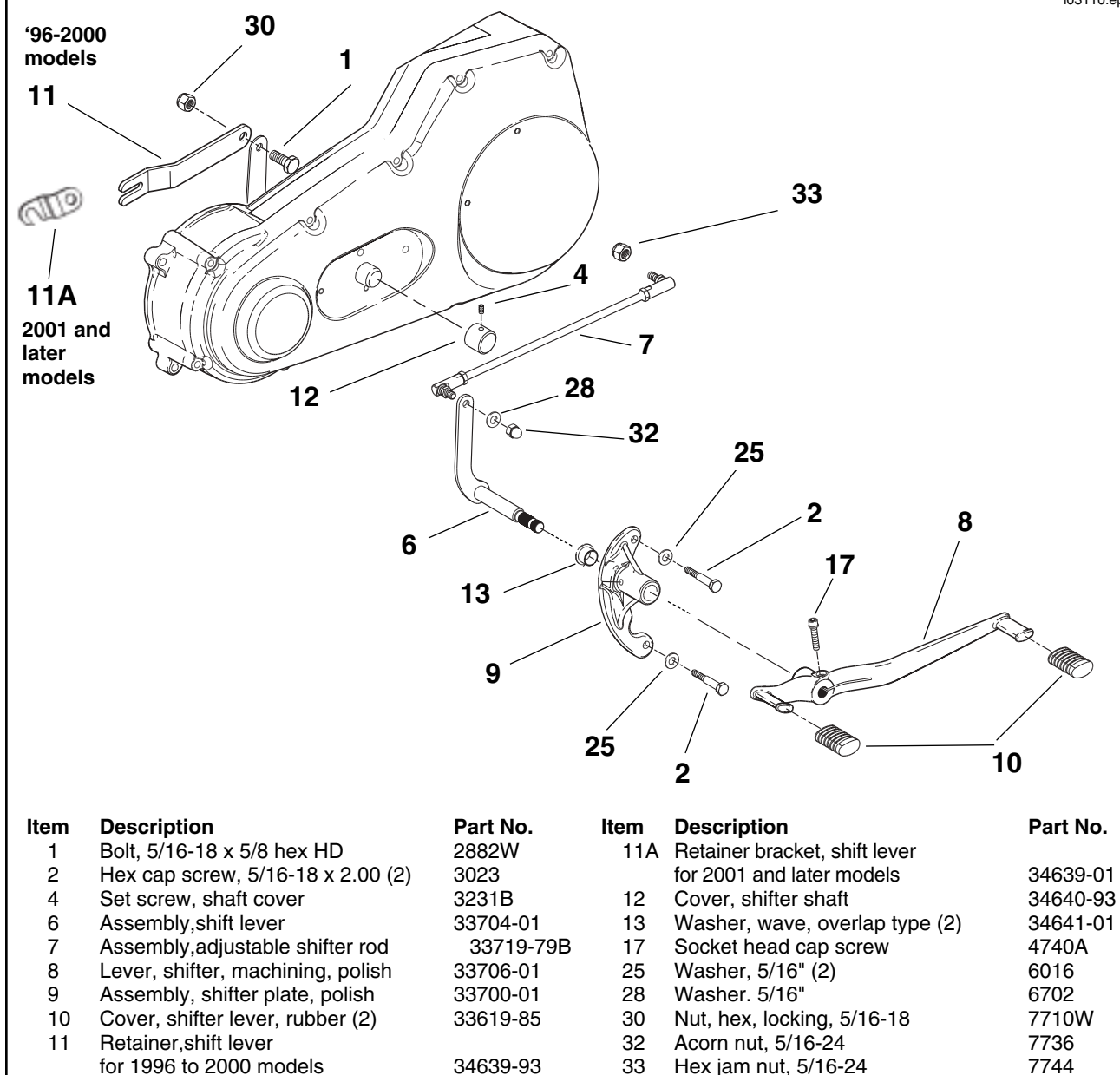


Figure 1. Shifter Assembly (Left Side)

4. See Figure 1.

1996 to 2000 models. Bolt shifter lever shaft retainer bracket (11) to the stock shifter lever with bolt (1) and nut (30). Do not tighten bolt at this time.

2001 and later models. Bolt shifter lever shaft retainer bracket (11A) to the stock shifter lever with bolt (1) and nut (30). Do not tighten bolt at this time.

5. Loosen the left rear crankcase bolt (at bottom of cylinder) and slide the slotted end of shifter lever shaft retainer bracket (11) onto the bolt, but beneath the washer. Tighten crankcase stud to 15-17 ft-lbs (20-23 Nm).

6. Place chrome cover (12) on shifter lever shaft (at primary case) and secure with set screw (5).

NOTE

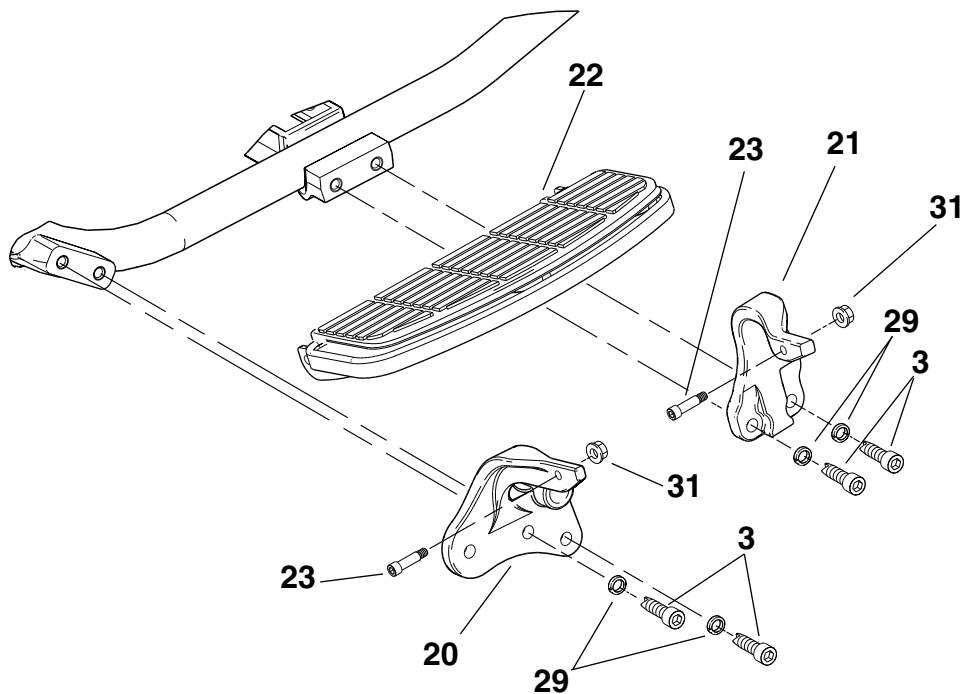
Small wave washer (13) goes between foot shifter and bracket.

7. See Figure 1. Place small wave washer (13) on shifter lever (6) shaft. Coat shaft with Loctite Anti-seize and slide into bracket.

8. Install foot shift bracket (9) using screws (2). Tighten screws to 25-30 ft-lbs (34-41 Nm).

9. Place shifter rod (2) and washers (25) in position. Use short stud on shifter rod to secure shifter rod at the transmission end. Use Loctite 242 (blue) on stud before installing.

10. Install acorn nut (32) and washer (28) at foot shift end. Use Loctite 242 (blue) on acorn nut before installing.



Item	Description	Part No.
3	Socket head cap screw, self tapping (8)	3214
20	Left front footboard support	50529-01
21	Left rear footboard support	50530-01
22	Assembly, footboard (2)	50632-85
23	Shoulder bolt, 1/4-20 x 1 (4)	50635-82A
29	Lockwasher, 3/8" (8)	7045
31	Flange nut, 1/4-20 (4)	7716

Figure 2. Install Footboard (Left Side)

11. Install shift lever (8). Tighten retaining bolt (17).
12. Install rubber shifter lever covers (10).
13. See Figure 2. Install footboard.

REAR BRAKE PEDAL ASSEMBLY (RIGHT SIDE)

1. Remove highway footrest assembly, if equipped. Save footrest and fasteners. Discard bracket, plate and mounting hardware.
2. Remove bolts from stock footrest assembly.
3. Loosen brake rod jam nut at master cylinder piston.

NOTE

Master cylinder piston has flats for a wrench. Turn the piston to unscrew the brake rod.

4. Unscrew master cylinder piston from stock brake rod. Remove stock brake rod, footrest mount and brake lever assembly. Save the jam nut, but discard the rest of the assembly.

5. See Figure 4. Install brake pedal bracket (18) using the screws (3). Tighten screws to 25-30 ft-lbs (34-41 Nm).
6. Install jam nut on new brake rod (14). Install new brake rod in master cylinder piston. Do not adjust at this time.

NOTE

Be sure to install the staked clevis pin (16) from the inside, so cotter pin (24) is installed on the outside.

7. Connect brake pedal (5) and brake rod (14) using the staked clevis pin (16). Rap the pin with a hammer to sink the stakes. Install the cotter pin (24).

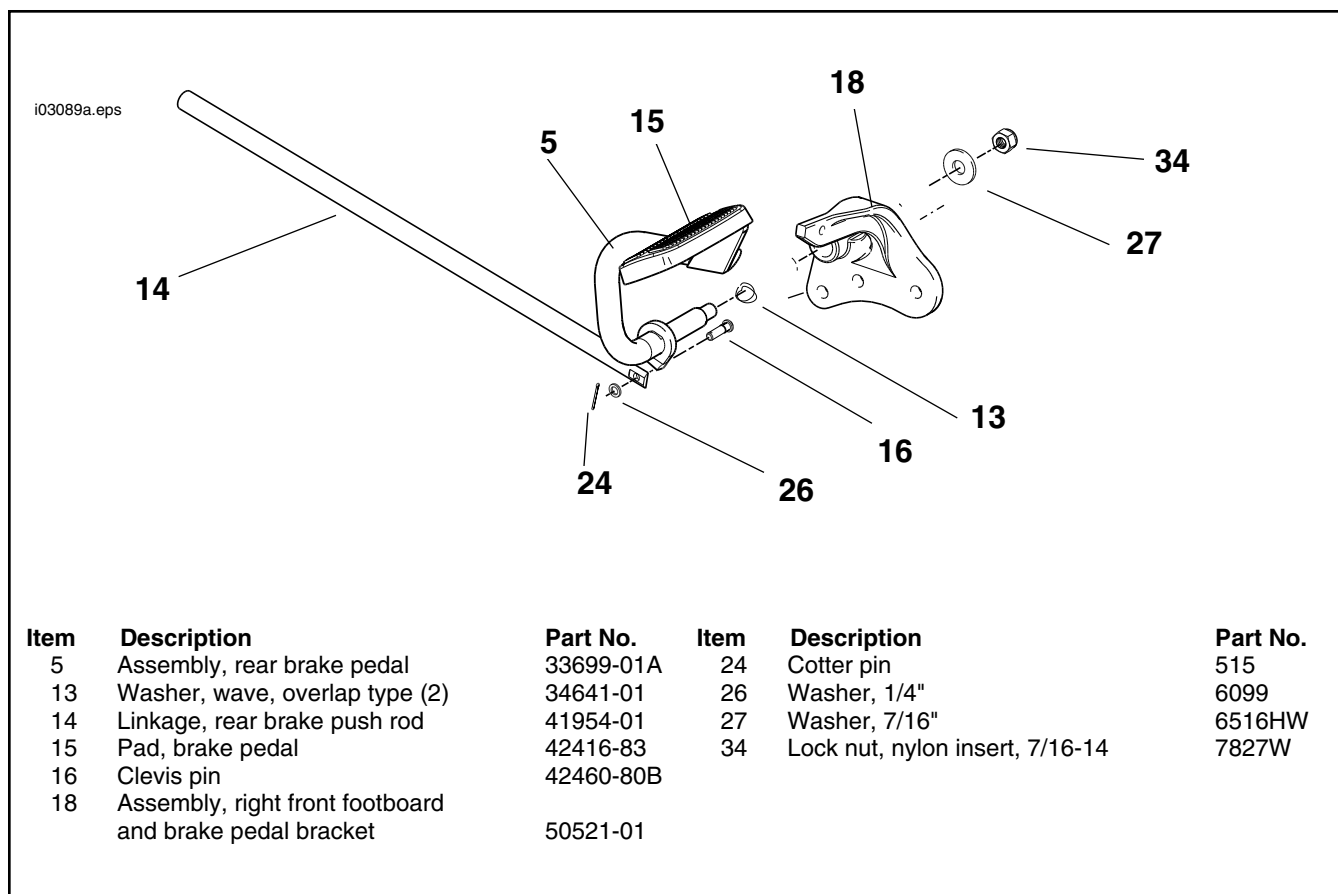
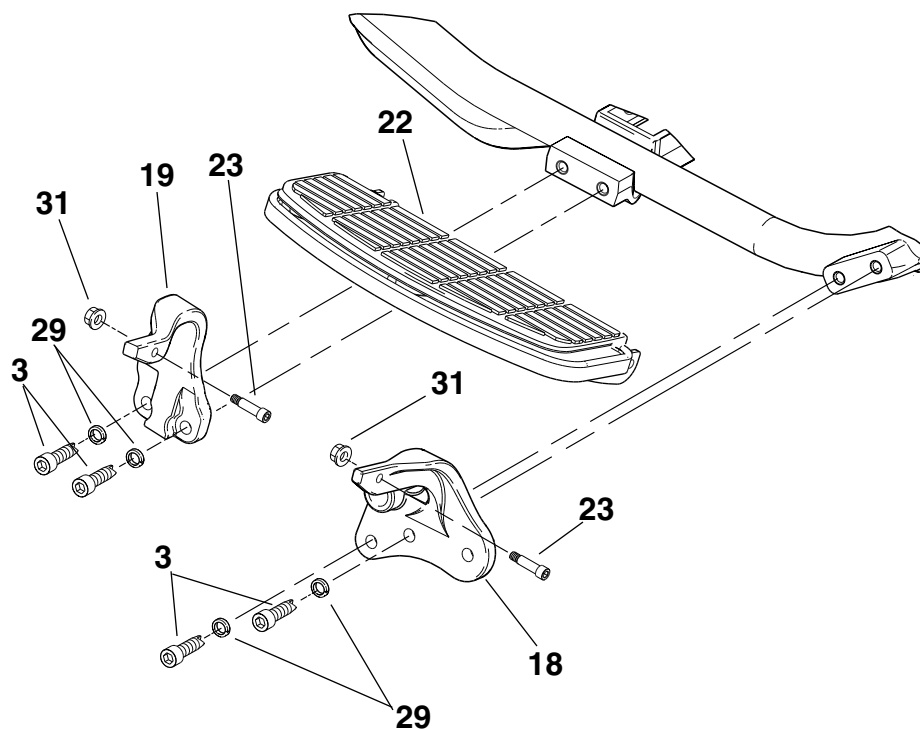


Figure 3. Rear Brake Pedal Assembly (Right Side)

8. Place the large wave washer (13) on the brake pedal shaft. Coat shaft with Loctite Anti-seize and place brake pedal into brake pedal bracket.
9. Install washer (27) and nut (34). Tighten nut to 17-20 ft-lbs (23-27 Nm).
10. See Figure 4. Install footboard.
11. Adjust brake pedal-to-bracket clearance by turning master cylinder piston until there is 7/16 in. clearance between brake pedal and bracket. Tighten jam nut.
12. Install brake pedal pad (15).

⚠ WARNING

Always test motorcycle brakes at low speed after completing repairs or bleeding the system. If brakes are not operating properly or braking efficiency is poor, testing at high speeds could result in death or serious injury.



Item	Description	Part No.
3	Socket head cap screw, self tapping (8)	3214
18	Assembly, right front footboard	50521-01
19	Right rear footboard support	50526-01
22	Assembly, footboard (2)	50632-85
23	Shoulder bolt, 1/4-20 x 1 (4)	50635-82A
29	Lockwasher, 3/8" (8)	7045
31	Flange nut, 1/4-20 (4)	7716

Figure 4. Install Footboard (Right Side)